



WELCOME!

Hulen Gardens Apartments is the most desired and affordable community south of Fort Worth, Texas. Bordered by I-20 and Chisholm Trail Pkwy, it grants quick access to the cities of Edgecliff Village, Fort Worth, and Benbrook as well as a myriad of fine dining, shopping and entertainment.

This stunning lifestyle hosts a pet-friendly community with large inviting homes, high-end amenities and great apartment features* that is just 20 minutes from downtown Fort Worth and so much more!

Once you take a tour and meet our professional and friendly staff, you will be ready to call Hulen Gardens your **home**.

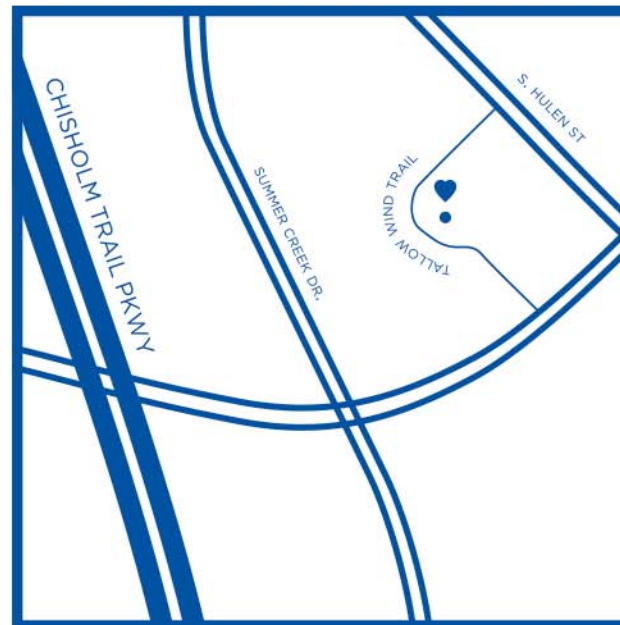
COMMUNITY AMENITIES

- 45 minutes away from DFW International Airport
- 24-Hour emergency maintenance
- Coffee bar
- Controlled access gate
- Courtesy patrol
- Fitness center
- On-site laundry facilities
- Pet-friendly community
- Playground
- Picnic areas with outdoor grills
- Quick access to major thoroughfares
- Reserved parking
- Resort-style swimming pool
- Sports court

APARTMENT FEATURES

- 2-inch faux wood blinds
- Accent cabinets
- Accent countertops
- Black appliances
- Ceiling fans
- Covered parking
- Curved shower rods
- Dishwashers
- Frost-free refrigerators
- Large floorplans
- Private patios/balconies
- Spacious closets
- Updated bath and kitchen fixtures
- Vinyl wood floors
- Washer and dryer connections*

ALL SQUARE FOOTAGE IS APPROXIMATE AND IS SUBJECT TO CHANGE. APARTMENT FEATURES MAY VARY BY UNIT. *ONLY IN SELECT UNITS



DIRECTIONS: TAKE **I-35W S.** AND **I-20 W** TO **SW Loop 820** AND TAKE EXIT **434A**. FOLLOW **GRANDBURY RD** AND **S. HULEN ST.** TO **TALLOW WIND TRAIL**. FROM **I-30 W**, TRAVEL SOUTH UNTIL IT TURNS INTO **CHISHOLM TRAIL PKWY**, THEN TAKE A LEFT ONTO **SYCAMORE SCHOOL RD.** AND FOLLOW TO **TALLOW WIND TRAIL**.

7415 Tallow Wind Trail Fort Worth, TX 76133
TEL (817) 294-0100 | FAX (817) 346-8936

E info.hulengardensapartments@wmci.biz

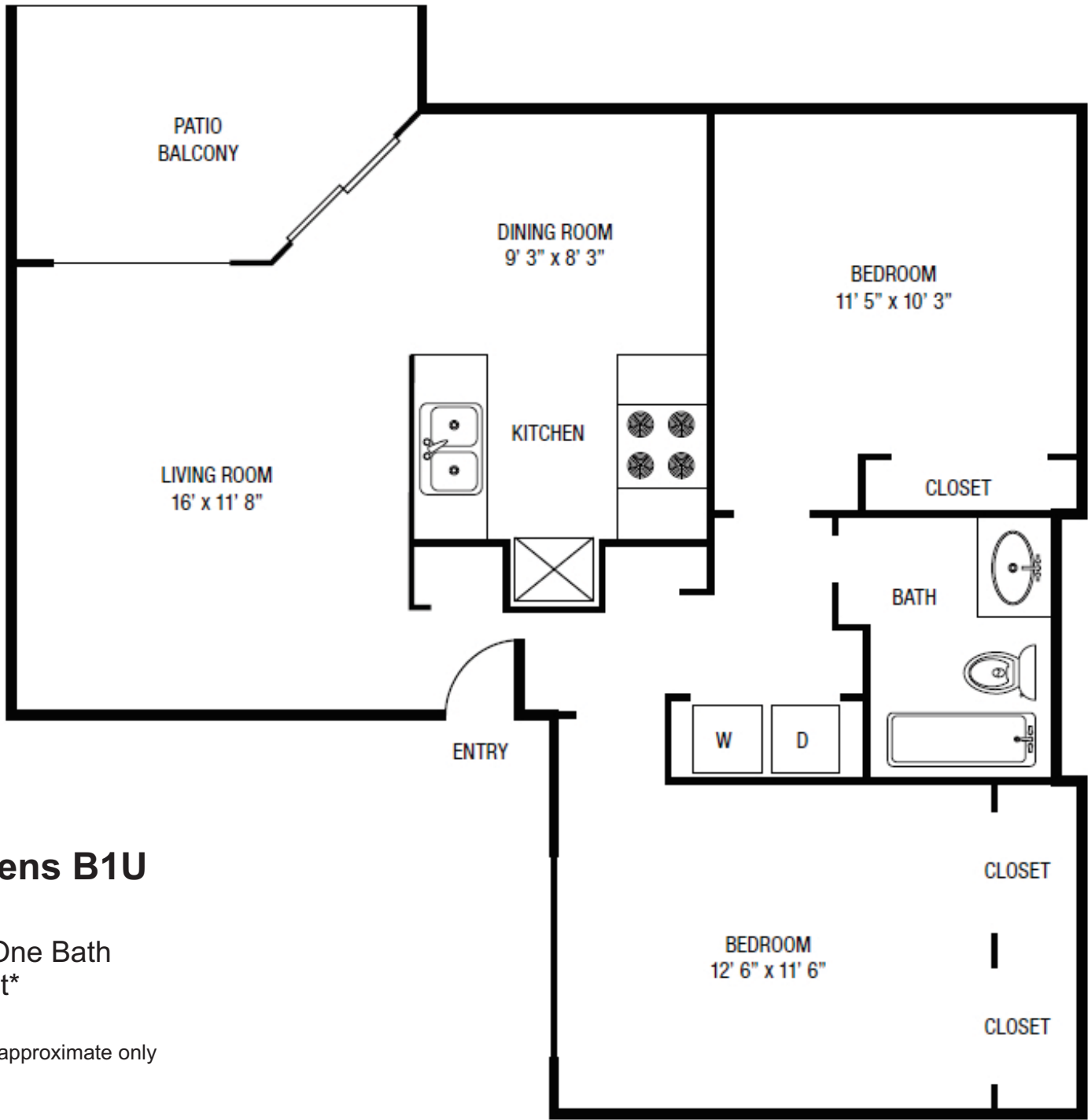
WWW.MYHULENGARDENS.COM



HULEN
GARDENS
APARTMENTS



A **GREAT** PLACE TO CALL **HOME**



Hulen Gardens B1U

Two Bedroom, One Bath
851 Square Feet*

*All square footage is approximate only